



KEARNY

At the intersection of  
creativity and convenience.

**nuveen**  
REAL ESTATE



Johnston Lang LaSalle Brokerage, Inc.  
10000 JLL Drive, Suite 1000, Dallas, TX 75243  
Phone: 214.760.1000 | Fax: 214.760.1001



# Building highlights.

Distinctive design. Unforgettable views.



Brand new lobby & elevator modification coming soon



Contiguous blocks available with interconnecting stairs



Creative spec suite coming soon



Move-in ready suites available



Tall ceiling heights of 13'6"



24/7 lobby attendant



Award winning Skidmore Owings & Merrill design



Side core design



Awarded LEED Gold by USGBC

# Find the perfect fit.

Spaces available in all different shapes, sizes, and layouts from 2,081 - 20,597 SF

# Available spaces.

**SUITE 1818 - 4,032 RSF**

Corner Suite Available  
05/01/2020

**SUITE 1770 - 2,081 RSF**

Available 02/01/2021

**SUITE 1750 - 4,724 RSF**

Available 02/01/2021

**SUITE 1100 - 10,306 RSF**

Available Now

**SUITE 1000 - 10,291 RSF**

Available Now

**20,597 CONTIGUOUS RSF**

**SUITE 875 - 2,603 RSF**

Available 11/01/20

**SUITE 800 - 3,950 RSF**

Available 9/01/20

**SUITE 700 - 6,692 RSF**

Corner Suite Available  
07/01/2020

18

17

11

10

8

7







At the intersection of San Francisco's MOST EXCITING SUBMARKETS



Convenient access to PUBLIC TRANSIT



On-site PARKING GARAGE



BIKE PARKING in building



STARBUCKS on-site



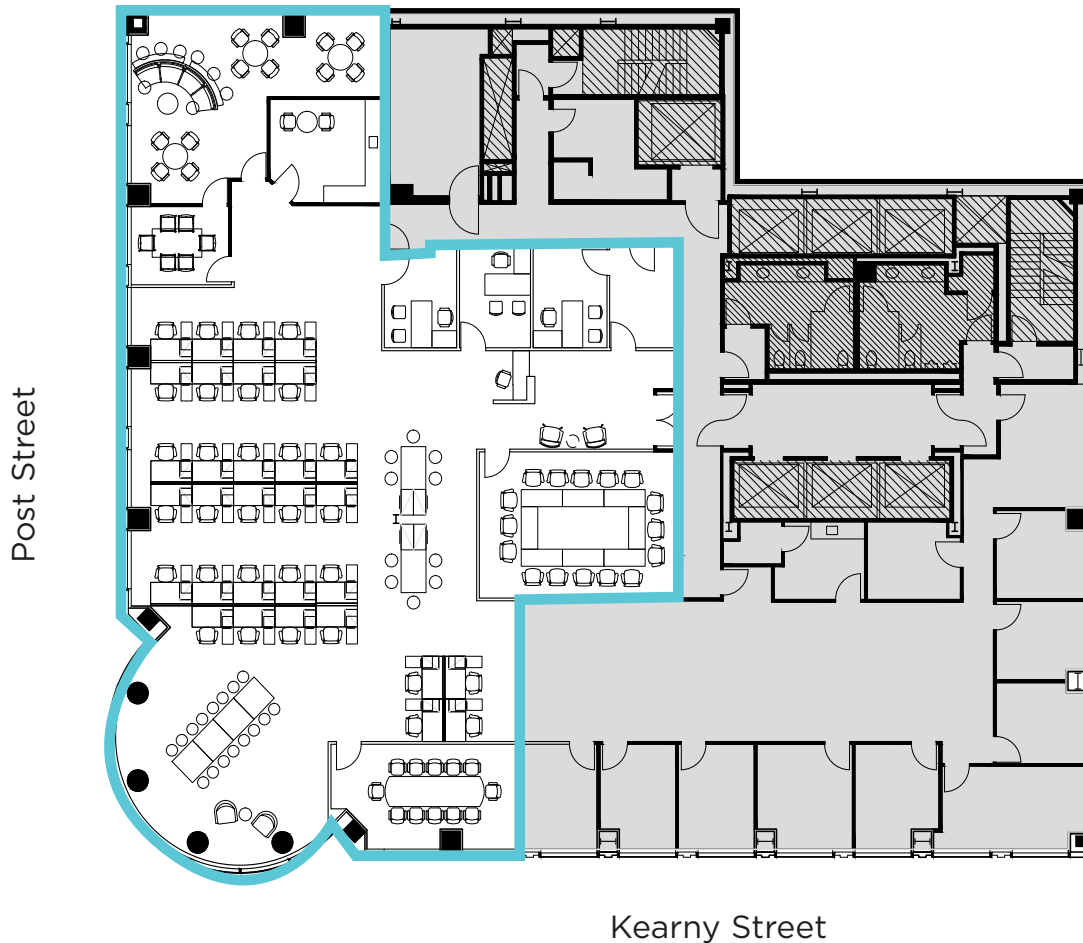






# Suite 700

6,692 RSF



- Available 07/01/20
- Double-door entry off the elevator lobby
- Corner suite with city views
- 3 Private offices
- 3 Conference rooms
- Kitchen
- Open area

For leasing information:

**Christopher T. Roeder**  
International Director  
415.395.4971  
chris.roeder@am.jll.com  
RE license # 01190523

**Ted Davies**  
Managing Director  
415.395.4972  
ted.davies@am.jll.com  
RE license # 01460185

**Tom Doupe**  
Senior Vice President  
415.395.4933  
tom.doupe@am.jll.com  
RE license # 01921218

**nuveen**  
REAL ESTATE

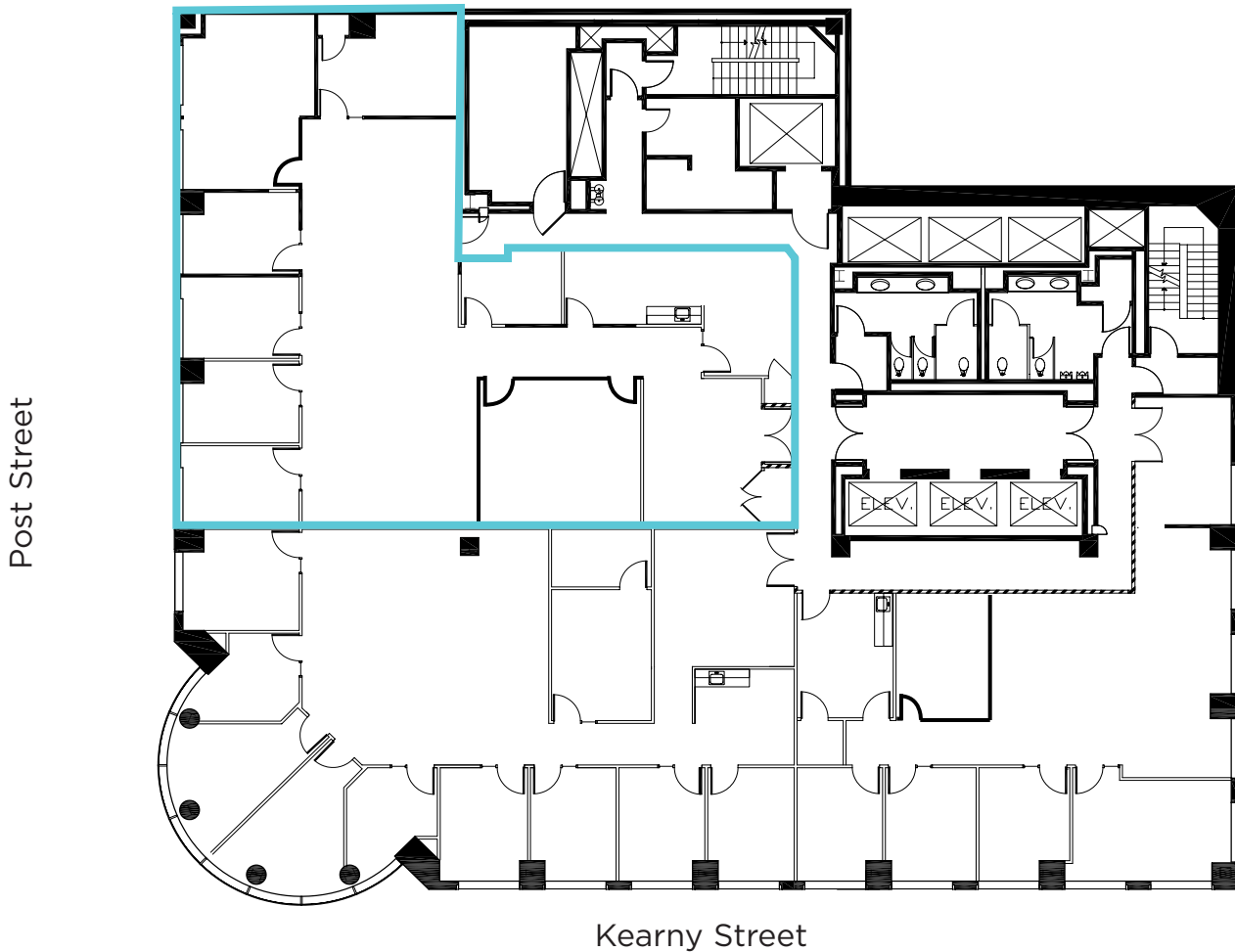
**JLL**

Jones Lang LaSalle Brokerage, Inc.  
Real Estate License #01856260



# Suite 800

3,950 RSF



- Available 09/01/20
- Double-door entry off the elevator lobby
- 4 Private offices
- 3 Conference rooms
- Kitchen
- Storage Room
- Term through 10/31/2024

For leasing information:

**Christopher T. Roeder**  
International Director  
415.395.4971  
chris.roeder@am.jll.com  
RE license # 01190523

**Ted Davies**  
Managing Director  
415.395.4972  
ted.davies@am.jll.com  
RE license # 01460185

**Tom Doupe**  
Senior Vice President  
415.395.4933  
tom.doupe@am.jll.com  
RE license # 01921218

**nuveen**  
REAL ESTATE

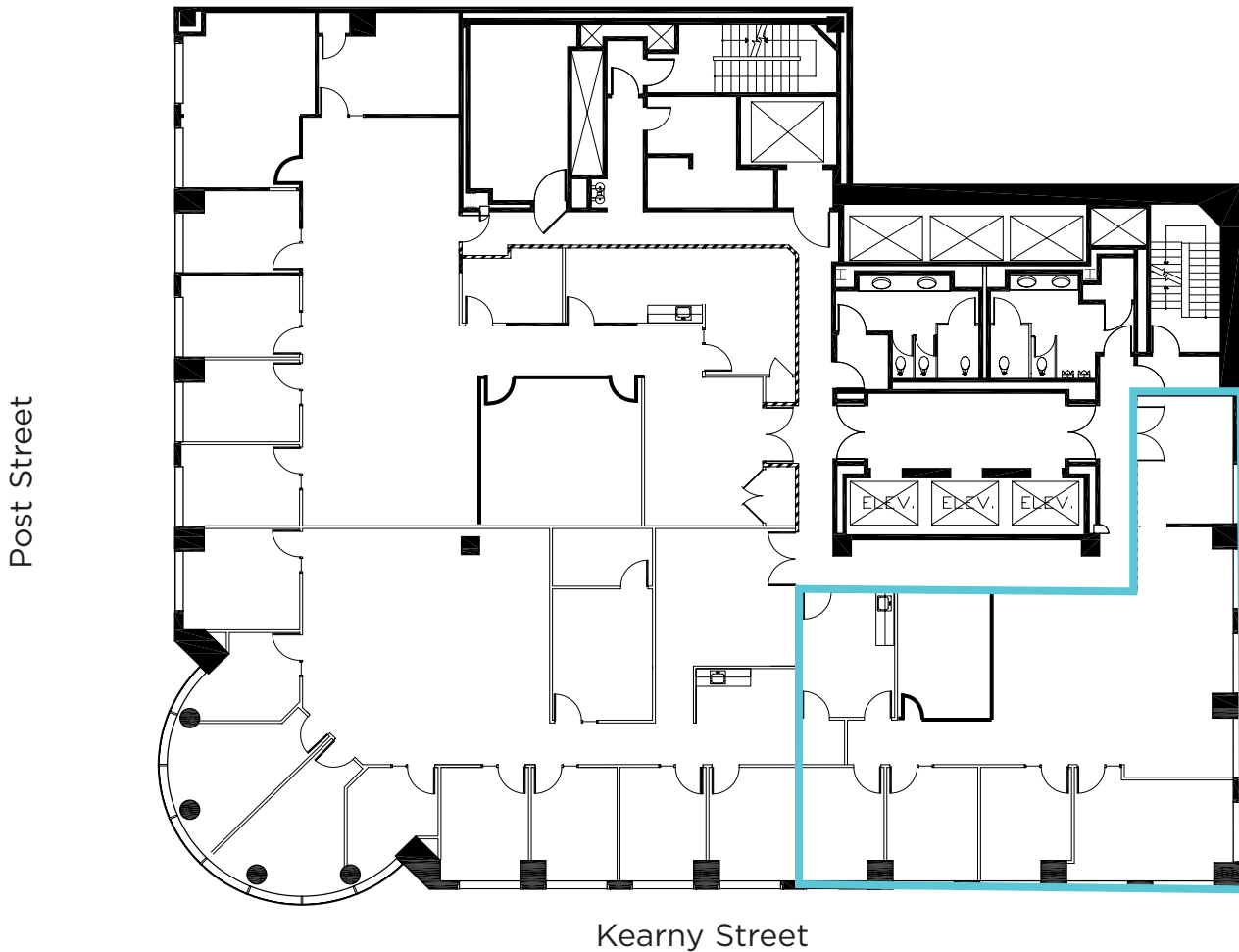


Jones Lang LaSalle Brokerage, Inc.  
Real Estate License #01856260



# Suite 875

2,603 RSF



- Available 11/01/20
- Double-door entry off the elevator lobby
- 3 Private offices
- 1 Conference rooms
- Kitchen
- Server Closet
- Storage Room
- Term through 10/31/2024

For leasing information:

**Christopher T. Roeder**  
International Director  
415.395.4971  
chris.roeder@am.jll.com  
RE license # 01190523

**Ted Davies**  
Managing Director  
415.395.4972  
ted.davies@am.jll.com  
RE license # 01460185

**Tom Doupe**  
Senior Vice President  
415.395.4933  
tom.doupe@am.jll.com  
RE license # 01921218

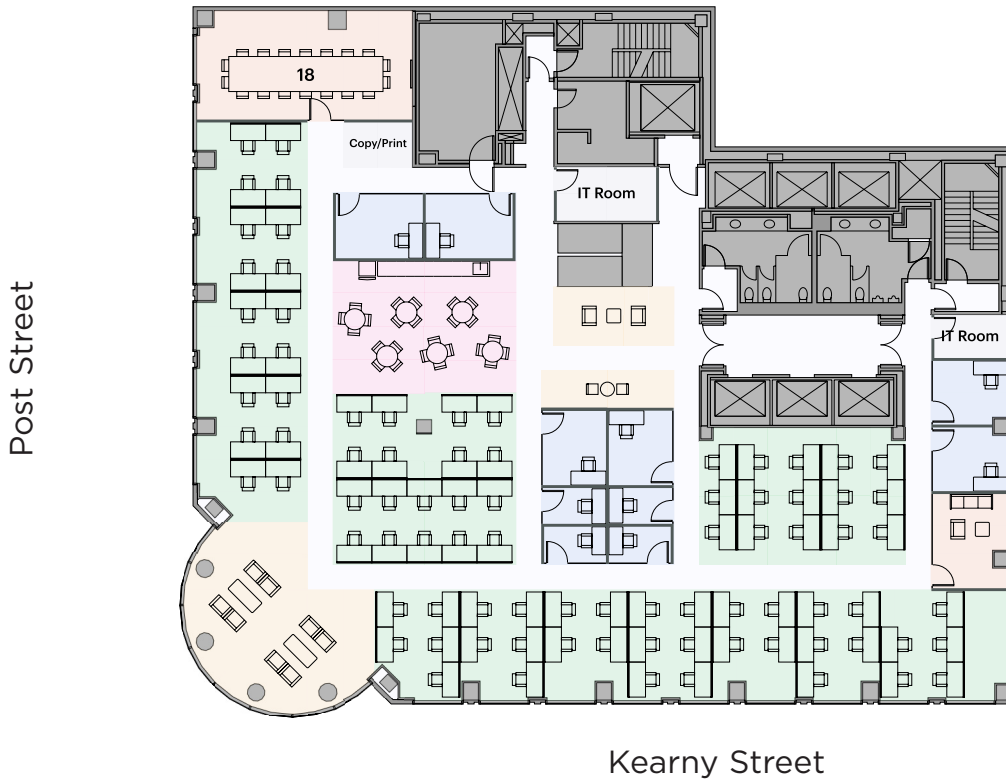
**nuveen**  
REAL ESTATE



Jones Lang LaSalle Brokerage, Inc.  
Real Estate License #01856260

# Suite 1000

10,291 RSF



\*Hypothetical plan\*

- Available now
- Full floor opportunity with interconnecting stairwell to the 11th floor
- Demo & TI allowance available
- Law firm as-built, plan not shown

For leasing information:

**Christopher T. Roeder**  
International Director  
415.395.4971  
chris.roeder@am.jll.com  
RE license # 01190523

**Ted Davies**  
Managing Director  
415.395.4972  
ted.davies@am.jll.com  
RE license # 01460185

**Tom Doupe**  
Senior Vice President  
415.395.4933  
tom.doupe@am.jll.com  
RE license # 01921218

**nuveen**  
REAL ESTATE



Jones Lang LaSalle Brokerage, Inc.  
Real Estate License #01856260



# Suite 1100

10,306 RSF



\*Hypothetical plan\*

- Available now
- Full floor opportunity with interconnecting stairwell to the 10th floor
- Demo & TI allowance available
- Law firm as-built, plan not shown

For leasing information:

**Christopher T. Roeder**  
International Director  
415.395.4971  
chris.roeder@am.jll.com  
RE license # 01190523

**Ted Davies**  
Managing Director  
415.395.4972  
ted.davies@am.jll.com  
RE license # 01460185

**Tom Doupe**  
Senior Vice President  
415.395.4933  
tom.doupe@am.jll.com  
RE license # 01921218

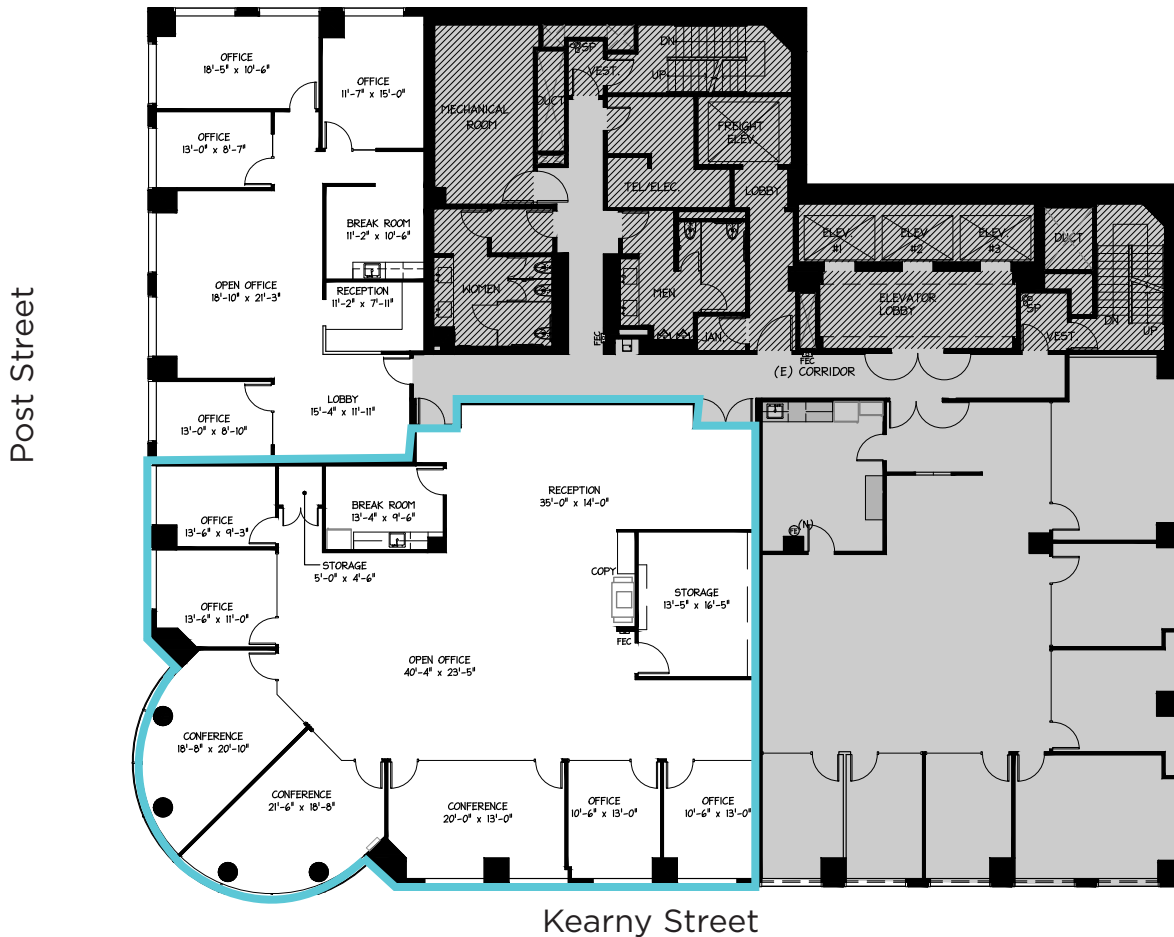
**nuveen**  
REAL ESTATE

**JLL**

Jones Lang LaSalle Brokerage, Inc.  
Real Estate License #01856260

# Suite 1750

4,084 sq.ft.



- Available 02/01/2021
- 3 Conference Rooms
- 4 Private Offices
- Kitchen
- 1 Large Storage Room
- Can be combined with Suite 1770 for 6,805 RSF

For leasing information:

**Christopher T. Roeder**  
International Director  
415.395.4971  
chris.roeder@am.jll.com  
RE license # 01190523

**Ted Davies**  
Managing Director  
415.395.4972  
ted.davies@am.jll.com  
RE license # 01460185

**Tom Doupe**  
Senior Vice President  
415.395.4933  
tom.doupe@am.jll.com  
RE license # 01921218

**nuveen**  
REAL ESTATE

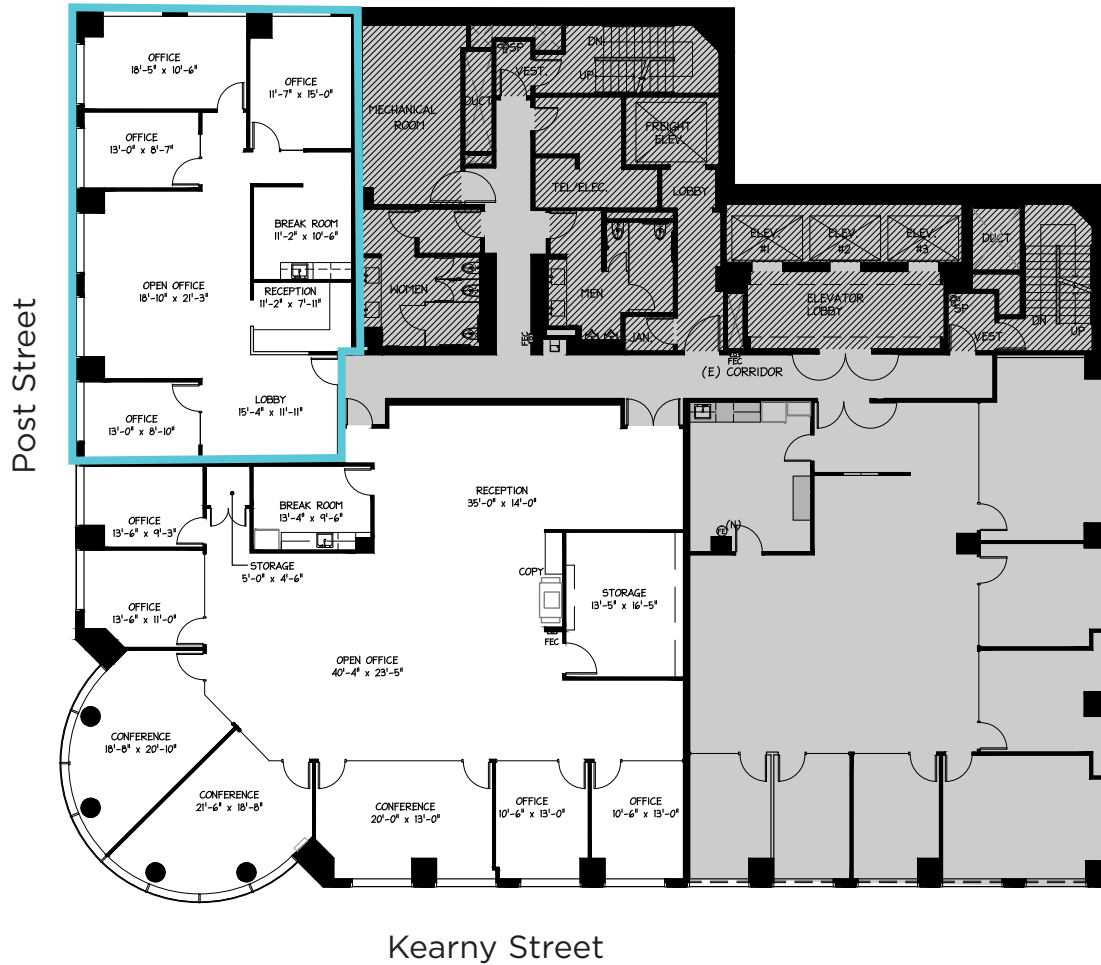


Jones Lang LaSalle Brokerage, Inc.  
Real Estate License #01856260



# Suite 1770

2,081 sq.ft.



- Available 2/1/2021
- 4 Private Offices
- Kitchen
- Can be combined with Suite 1750 for 6,805 RSF

For leasing information:

**Christopher T. Roeder**  
International Director  
415.395.4971  
chris.roeder@am.jll.com  
RE license # 01190523

**Ted Davies**  
Managing Director  
415.395.4972  
ted.davies@am.jll.com  
RE license # 01460185

**Tom Doupe**  
Senior Vice President  
415.395.4933  
tom.doupe@am.jll.com  
RE license # 01921218

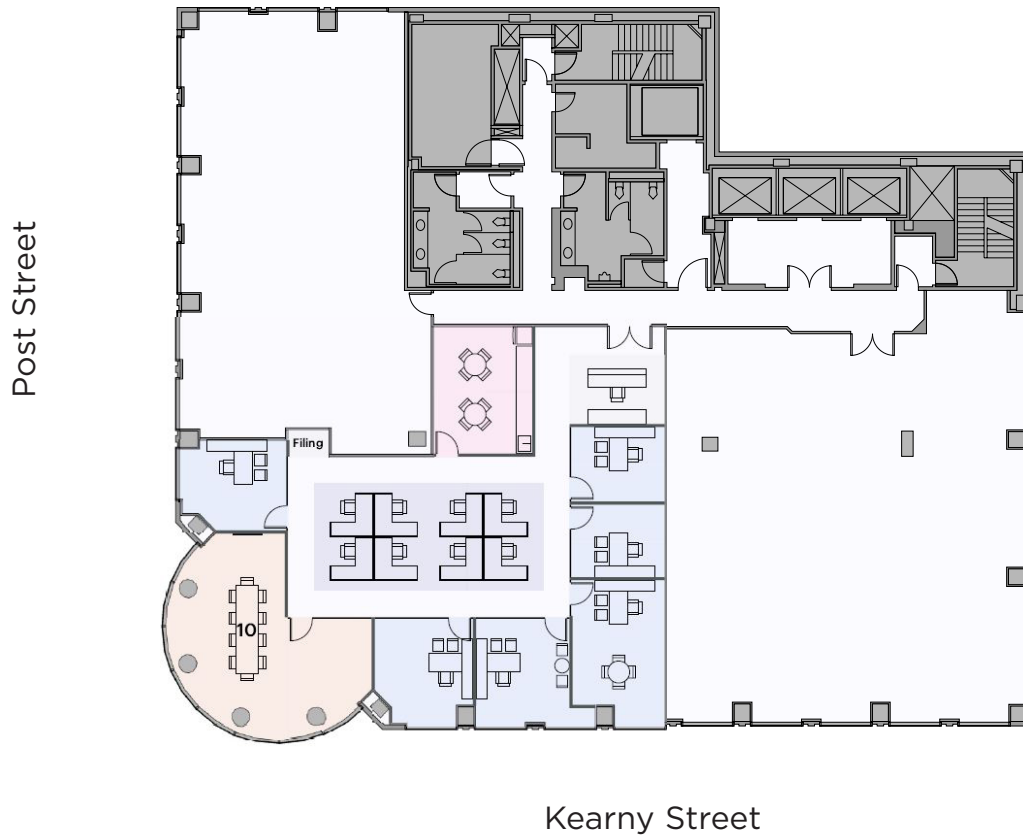
**nuveen**  
REAL ESTATE



Jones Lang LaSalle Brokerage, Inc.  
Real Estate License #01856260

# Suite 1818

4,084 sq.ft.



- Available 05/01/2020
- Corner suite with views over Union Square
- Demo & TI allowance available
- 6 private offices
- 1 conference room
- Kitchen
- Short-term option potentially available

For leasing information:

**Christopher T. Roeder**  
International Director  
415.395.4971  
chris.roeder@am.jll.com  
RE license # 01190523

**Ted Davies**  
Managing Director  
415.395.4972  
ted.davies@am.jll.com  
RE license # 01460185

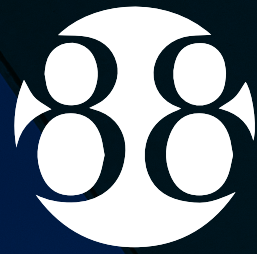
**Tom Doupe**  
Senior Vice President  
415.395.4933  
tom.doupe@am.jll.com  
RE license # 01921218

**nuveen**  
REAL ESTATE



Jones Lang LaSalle Brokerage, Inc.  
Real Estate License #01856260





KEARNY

For leasing information

**Christopher T. Roeder**  
International Director  
415.395.4971  
chris.roeder@am.jll.com  
RE license # 01190523

**Ted Davies**  
Managing Director  
415.395.4972  
ted.davies@am.jll.com  
RE license # 01460185

**Tom Doupe**  
Senior Vice President  
415.395.4933  
tom.doupe@am.jll.com  
RE license # 01921218

Leasing services provided by:

**nuveen**  
REAL ESTATE



Jones Lang LaSalle Brokerage, Inc.  
Real Estate License #01856260