



KEARNY

At the
intersection of
creativity and
convenience.

nuveen
REAL ESTATE



Jones Lang LaSalle Brokerage, Inc.
Real Estate License #01856260

Building highlights.

Distinctive design. Unforgettable views.



Brand new lobby & elevator modification coming soon



Contiguous blocks available with interconnecting stairs



Creative spec suite coming soon



Move-in ready suites available



Tall ceiling heights of 13'6"



24/7 lobby attendant



Award winning Skidmore Owings & Merrill design



Side core design



Awarded LEED Gold by USGBC

Find the perfect fit.

Spaces available in all different shapes, sizes, and layouts from 5,000-28,000 SF

Available spaces.

SUITE 1450 - 5,000 RSF

Brand new spec suite coming Q3 2019

SUITE 1300 - 8,500 RSF

Short term opportunity through Q3 2021

SUITE 1200 - 10,500 RSF

Available 4/1/2019

19,000 CONTIGUOUS RSF

SUITES 400 & 500 - 28,000 RSF

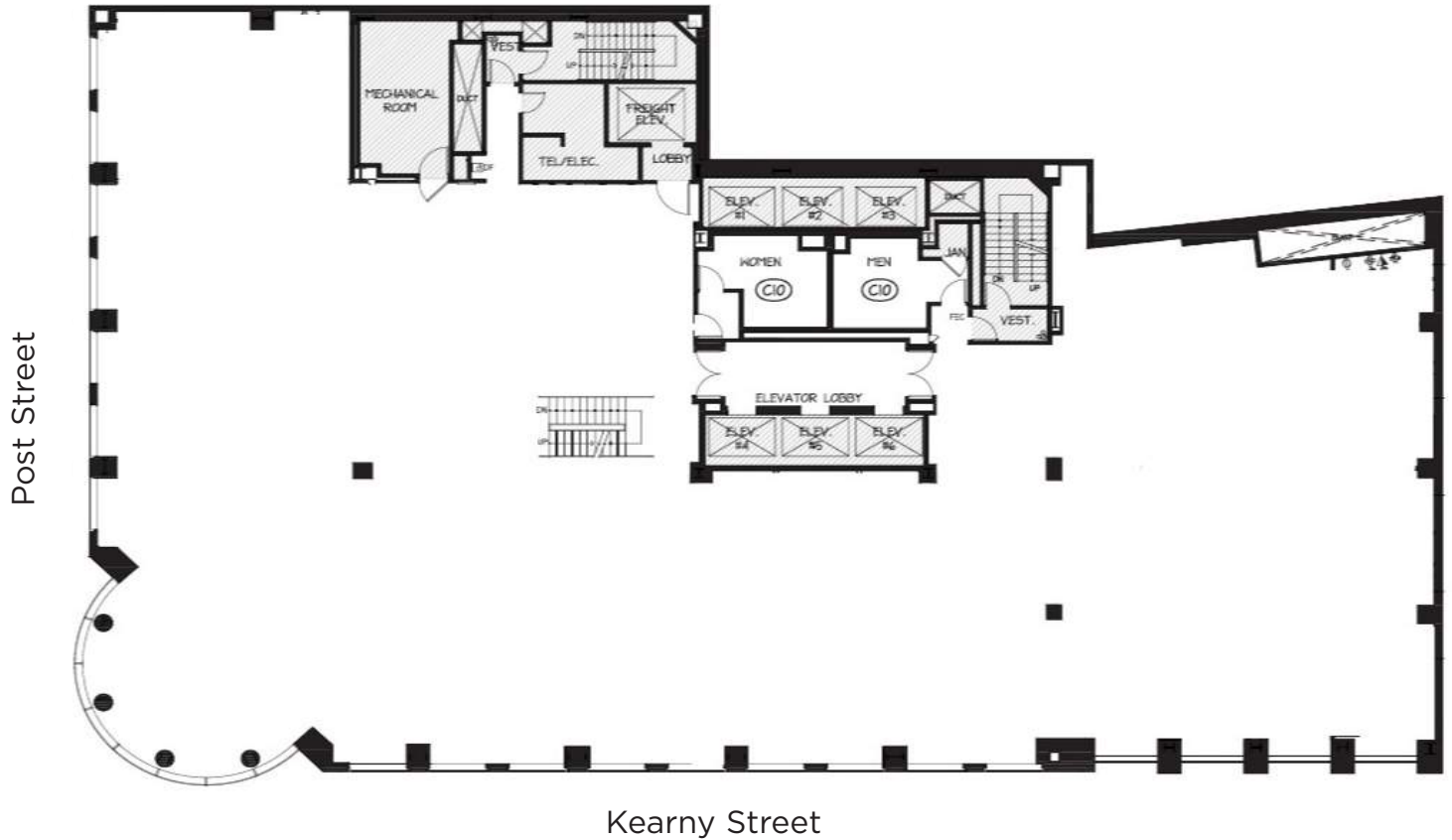
Available now





Suite 400 & 500

28,000 sq.ft.



- Available now
- Efficient side core design
- Full floor opportunity
- To be delivered in warm shell condition
- Interconnecting stairwell

For leasing information:

Christopher T. Roeder
International Director
415.395.4971
chris.roeder@am.jll.com
RE license # 01190523

Ted Davies
Managing Director
415.395.4972
ted.davies@am.jll.com
RE license # 01460185

Tom Doupe
Vice President
415.395.4933
tom.doupe@am.jll.com
RE license # 01921218

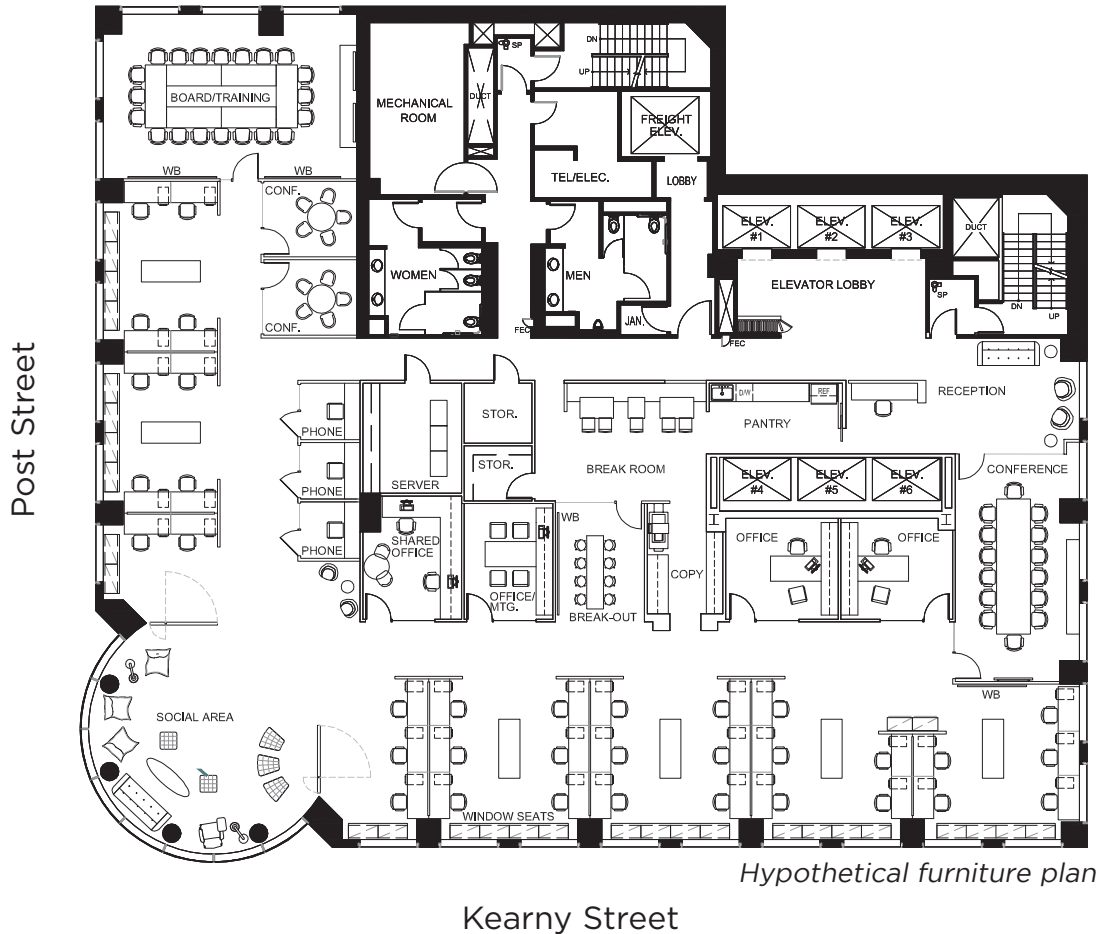
nuveen
REAL ESTATE



Jones Lang LaSalle Brokerage, Inc.
Real Estate License #01856260

Suite 1200

10,500 sq.ft.



- Available 4/1/19
- 19,000 RSF combined with Suite 1300
- Move-in ready
- Exposed ceilings in reception and social area
- 1 large conference room
- 1 boardroom/training room
- 2 medium conference rooms
- 4 offices
- 3 phone rooms
- Kitchen
- Server room
- TI allowance available

For leasing information:

Christopher T. Roeder
International Director
415.395.4971
chris.roeder@am.jll.com
RE license # 01190523

Ted Davies
Managing Director
415.395.4972
ted.davies@am.jll.com
RE license # 01460185

Tom Doupe
Vice President
415.395.4933
tom.doupe@am.jll.com
RE license # 01921218

nuveen
REAL ESTATE

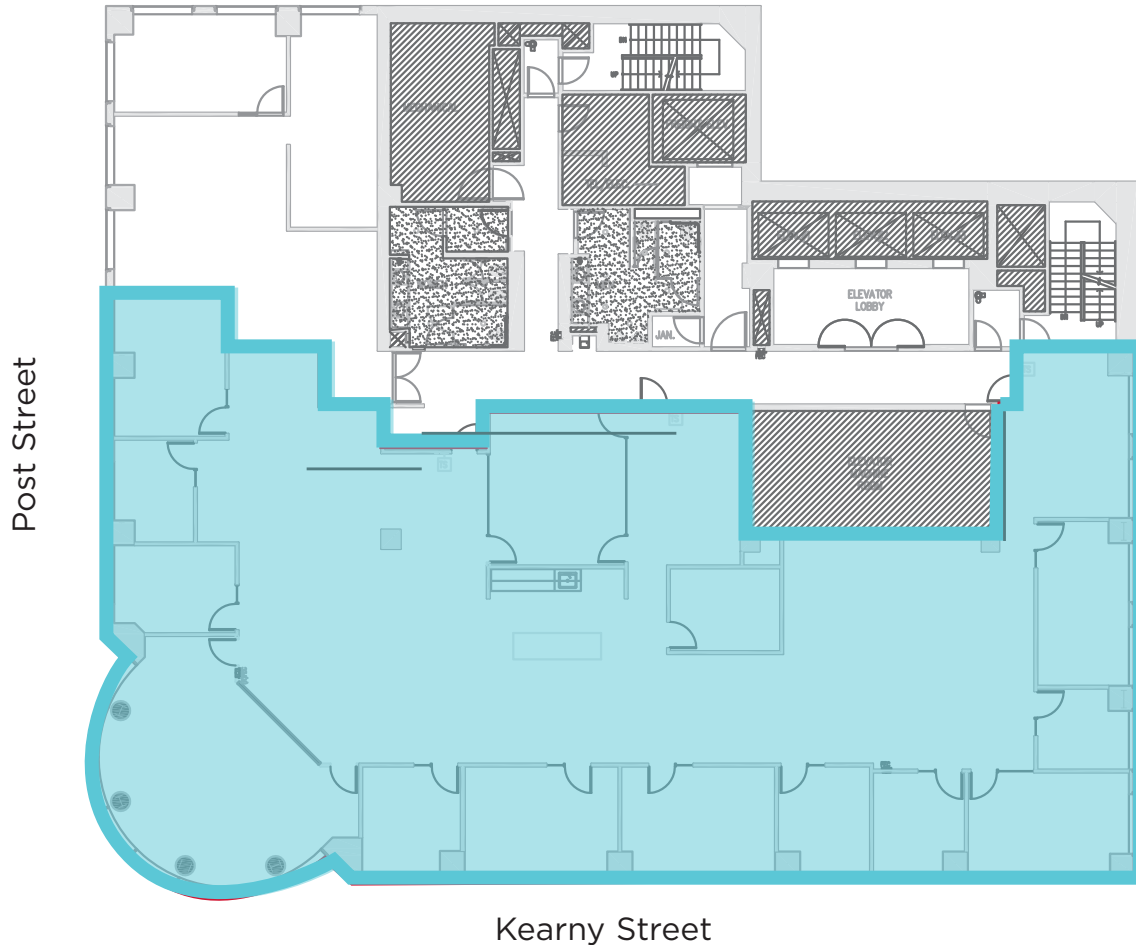
JLL

Jones Lang LaSalle Brokerage, Inc.
Real Estate License #01856260

Suite 1300

8,500 sq.ft.

Short-term Opportunity Through
Q3 2021 is Available!



- \$59 FSG asking rate
- 11 exterior private offices
- 1 large boardroom & 1 interior conference room
- Open kitchen
- Server room
- Reception area
- 19,000 RSF combined with Suite 1200

For leasing information:

Christopher T. Roeder
International Director
415.395.4971
chris.roeder@am.jll.com
RE license # 01190523

Ted Davies
Managing Director
415.395.4972
ted.davies@am.jll.com
RE license # 01460185

Tom Doupe
Vice President
415.395.4933
tom.doupe@am.jll.com
RE license # 01921218

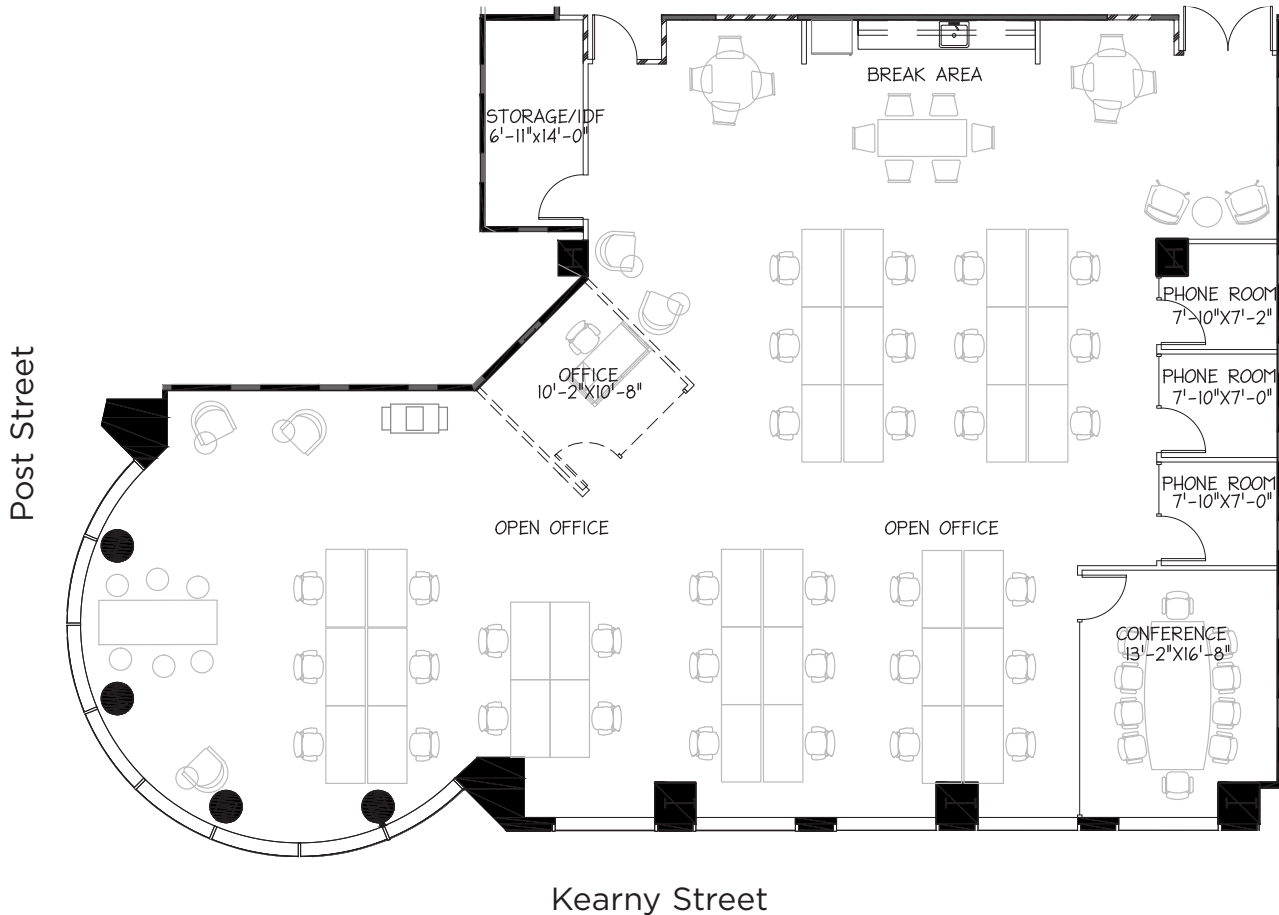
nuveen
REAL ESTATE

JLL

Jones Lang LaSalle Brokerage, Inc.
Real Estate License #01856260

Suite 1450

5,000 sq.ft.



- Brand new spec suite
- Occupancy Q3 2019
- New corridor & restrooms coming in 2019
- 1 conference room
- 3 phone rooms
- Open kitchen
- Storage/IDF room
- 34 workstations

For leasing information:

Christopher T. Roeder
International Director
415.395.4971
chris.roeder@am.jll.com
RE license # 01190523

Ted Davies
Managing Director
415.395.4972
ted.davies@am.jll.com
RE license # 01460185

Tom Doupe
Vice President
415.395.4933
tom.doupe@am.jll.com
RE license # 01921218

nuveen
REAL ESTATE

JLL

Jones Lang LaSalle Brokerage, Inc.
Real Estate License #01856260



At the intersection of San Francisco's MOST EXCITING SUBMARKETS



Convenient access to PUBLIC TRANSIT



On-site PARKING GARAGE



BIKE PARKING in building



STARBUCKS on-site





KEARNY

For leasing information

Christopher T. Roeder
International Director
415.395.4971
chris.roeder@am.jll.com
RE license # 01190523

Ted Davies
Managing Director
415.395.4972
ted.davies@am.jll.com
RE license # 01460185

Tom Doupe
Vice President
415.395.4933
tom.doupe@am.jll.com
RE license # 01921218

Leasing services provided by:

nuveen
REAL ESTATE



Jones Lang LaSalle Brokerage, Inc.
Real Estate License #01856260